



Little LODGE

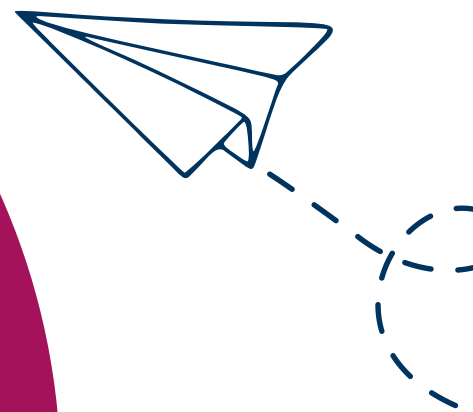
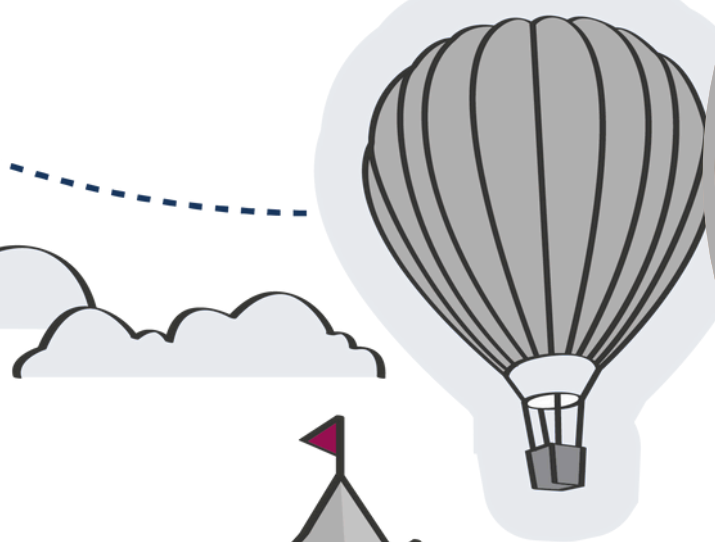


Nursery Fees & Funding for
Academic Year 2025 / 2026

Introduction to Little Lodge

Little Lodge Nursery offers a high quality early years education in the heart of Leamington Spa. We are open for 51 weeks and our opening hours are from 8:00am – 6:00pm, we offer both full and part time places.

We are registered with Warwickshire County Council to provide Early Years Funding for eligible 9 months to 4 year olds. We have put together this guide to help you understand and make the most of your entitlement.



Standard Fees

These are our standard fees with no available funding applied.



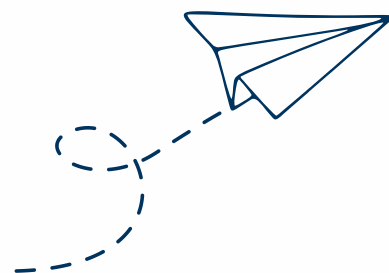
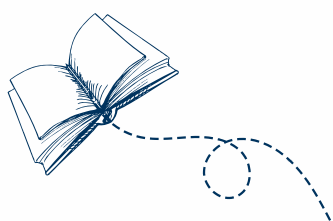
Nursery Session Charges 25/26	Babies	Toddlers	Tweenies	Pre – School
Morning Session (includes lunch) 8:00am to 12:30pm	£55.00	£55.00	£55.00	£50.00
Afternoon Session (includes tea) 1:30pm - 6:00pm	£55.00	£55.00	£55.00	£50.00
Short Day Session (includes Lunch) 8:30am to 3:30pm	£80.00	£80.00	£70.00	£70.50
Full Day Session (includes all meals) 8:00am to 6:00pm	£90.50	£90.50	£85.00	£81.50
Full Time Package (includes all meals) 8:00am to 6:00pm Monday to Friday (Full Year) (This can not be used with Funding)	£407.25	£407.25	£382.50	£366.75

All invoices are worked out on an annual basis and divided equally across the remaining months of the academic year. Invoices will be issued on the 22nd of each month for payment on the 1st. Invoicing is always 1 month in advance. Should you have any queries or require further information on funding please contact the finance team at finance@newmanschools.co.uk.

Minimum Session Requirements:

(A full day is considered as 2 sessions)

- For under 2s a minimum of 4 sessions increasing to 6 or more when settled.
- For 2 year olds a minimum of 4 sessions increasing to 6 or more when settled.
- For 3 and 4 year olds a minimum of 4 morning sessions increasing to a minimum of 6 sessions by the Spring Term.
- **We are a full year nursery only - Term Time places are at the discretion of the Nursery Manager and dependent on capacity and staffing.**



Available Funding

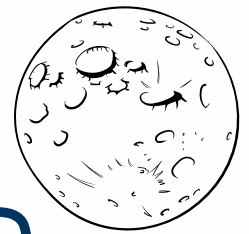
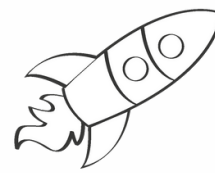


Working Families Funding

Universal Funded Childcare

Supported Two Year Funding

Tax Free Childcare



Working Families Funding

Children from 9 months may be eligible for up to 30 hours per week, term time. This equates to 1140 hours per annum. Eligibility is dependent on you working a minimum of 16 hours per week and earning less than £100,000 per annum. If you have a partner then this applies to you both. Eligibility must be verified with an access code and applications must be made online – www.warwickshire.gov.uk/childcarecosts

Supported Two Year Funding

Children from 2 years are able to access this funding if you are in receipt of certain benefits such as Income Support or Universal Credit, or your child is in receipt of Disability Living Allowance. You may be awarded up to 30 funded hours, term time which equates to 1140 hours per annum.

Eligibility must be verified with an access code and applications must be made online – www.warwickshire.gov.uk/childcarecosts.

Universal Funded Childcare

Children who are 3 - 4 year olds are automatically entitled to 15 funded hours, term time which equates to 570 hours per annum. This entitlement begins the term after their 3rd birthday. A parental declaration form will be sent out via Funding Loop following acceptance of your place at Little Lodge. This must be completed to access the funding.

Further information on funding and other entitlements such as EYPP, DAF and Tax Free Childcare may be found here <https://www.childcarechoices.gov.uk/>.

Tax Free Childcare

You (and your partner) need to be working and earning less than £100,000 per annum. For every 80p you pay in the government adds 20p. The government will top up your account with 20% up to a total of £10,000 per annum. This could equate to £2,000 per child.

Once you have paid your money in, select 'Little Lodge Nursery' as your provider and pay the money to us.

Full eligibility and applications can be found here - [Apply for Tax-Free Childcare - GOV.UK](https://www.gov.uk/apply-for-tax-free-childcare).

Making the most of your funding

We want our families to use their full funding entitlement. With us being open 51 weeks, we stretch all the entitlement over this period.

Understanding Stretched Funding

Regular Funding

15 hours per week * 38 weeks a year = 570 hours of funded childcare

30 hours per week * 38 weeks a year = 1140 hours of funded childcare



Stretched Funding

15 Hour entitlement - 570 hours of funded childcare split over 51 Weeks = 11.18 hours per week

30 Hour entitlement - 1140 hours of funded childcare split over 51 Weeks = 22.35 hours per week.



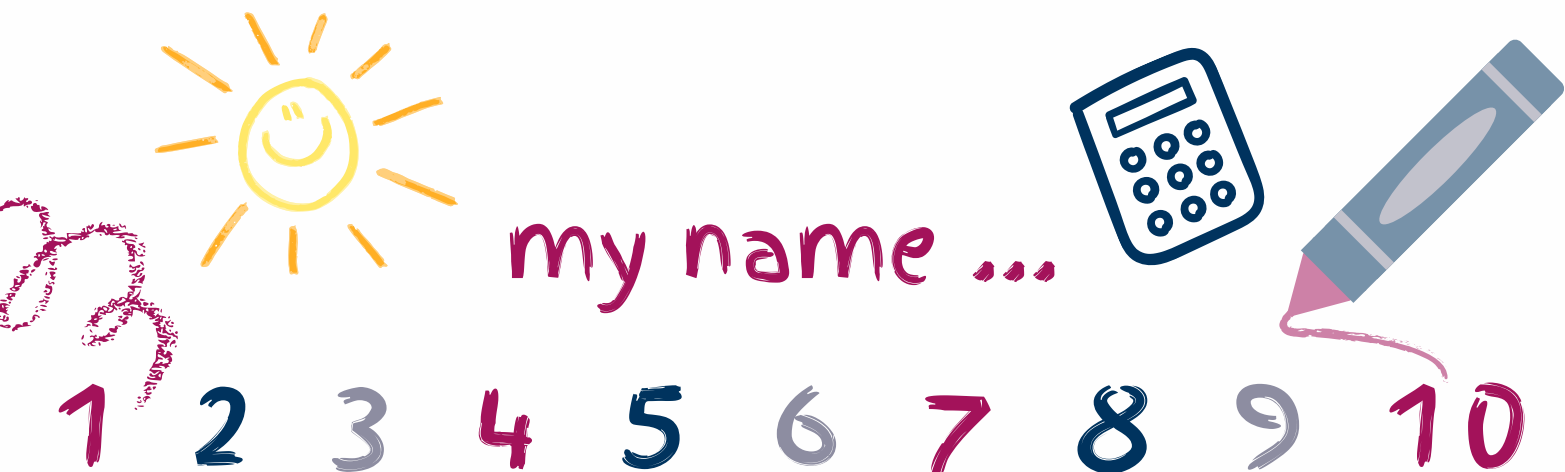
Fully funded hours only are dependent on capacity and must be agreed with the Nursery Manager prior to joining.

The Government funding is for the provision of early years education only and does not cover the cost of consumable items such as drinks, meals, hygiene supplies, children's resources, specialist lessons or activities that form part of our wider offering and therefore these costs are charged separately. These are our Additional Extras.

Additional Extras	Per Day
Food - Lunch, Tea & Snacks	£5.00
Consumables	£2.50
Enrichments & Activities (Babies & Toddlers)	£2.00
Enrichments & Activities (Tweenies & Pre-School)	£2.50

Additional Extras

The additional extras are a package option that will be listed separately on your invoice. This is charged on a daily basis. You must give one full term's written notice to opt in or opt out.



Weekly Cost - Including Funding

Little Lodge - 15 Funded Hours (11.18 hours per week - 2.24 free funded hours per day) 5 days

Session Charges 25/26	Babies	Toddlers	Tweenies	Pre – School
Short Day Session 8:30 -15:30	£272.23	£272.23	£238.20	£239.90
Full Day Session 8:00 to 18:00	£351.32	£351.32	£329.97	£316.38

Little Lodge - 30 Funded Hours (22.35 hours per week - 4.47 free funded hours per day) 5 days

Session Charges 25/26	Babies	Toddlers	Tweenies	Pre – School
Short Day Session 8:30 -15:30	£144.57	£144.57	£126.50	£127.40
Full Day Session 8:00 to 18:00	£250.23	£250.23	£235.03	£225.35

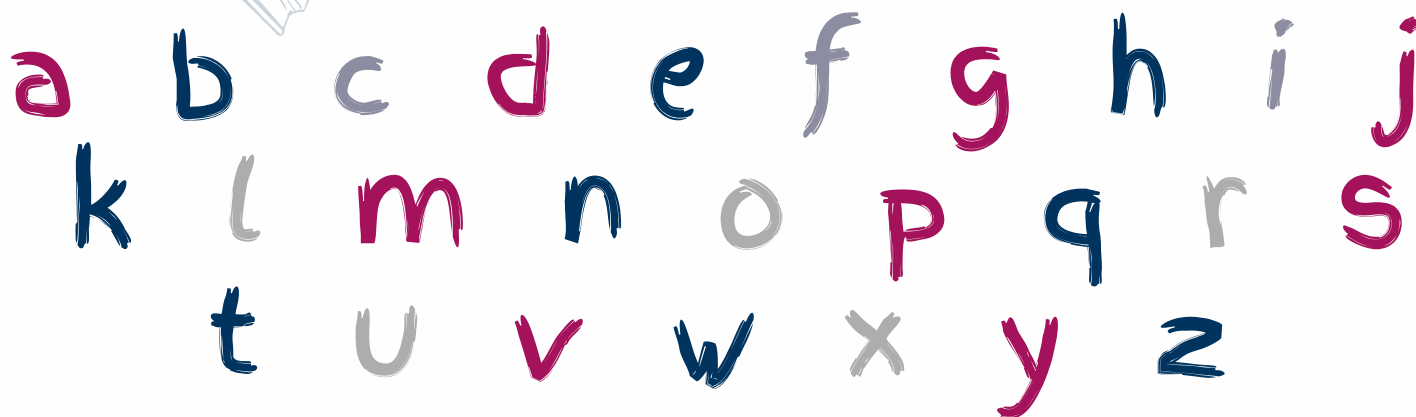
All fees are worked out based on the hourly cost from the figures on page 3. The free funded hours are deducted and you are charged for the remaining hours. You are only able to book the sessions listed. Ad Hoc sessions are available based on capacity and will be charged at the full rate.

A maximum of 5.59 hours per day for 15 hour funded children or 6 hours per day for 30 hour funded children will be applied in any one day.

Funding will only be applied to short or full-day sessions

If you claim funding you are only able to amend your booking pattern termly. Any other changes outside of this will be charged at the full rate.

If a pupil is withdrawn from Nursery, one full month's notice in writing must be given (as per the parent contract) otherwise parents will be required to pay the full fees in lieu of notice.



★ IT'S ★
TIME ★
FOR A NEW
ADVENTURE





Little
LODGE

